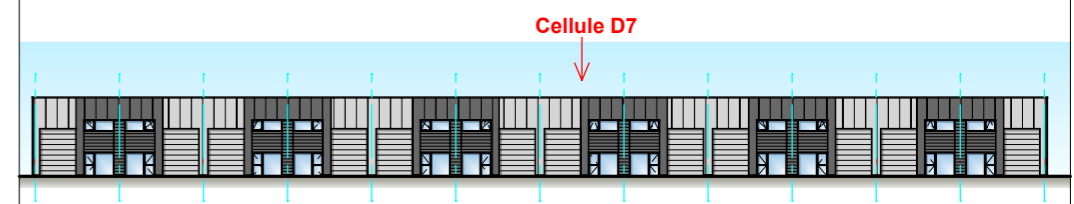
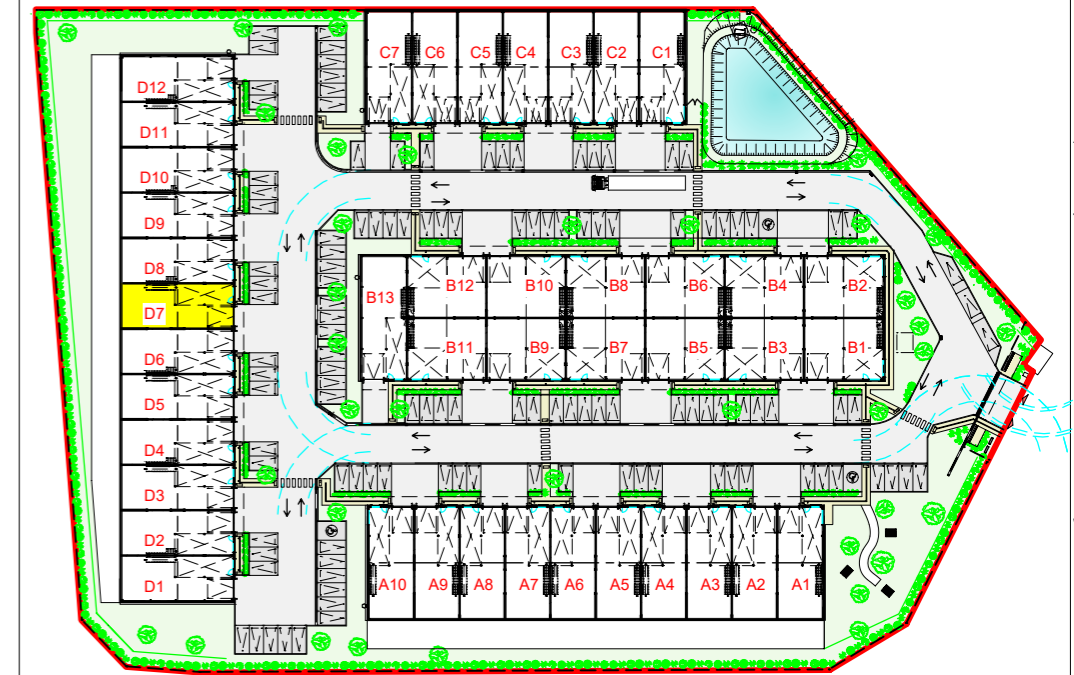
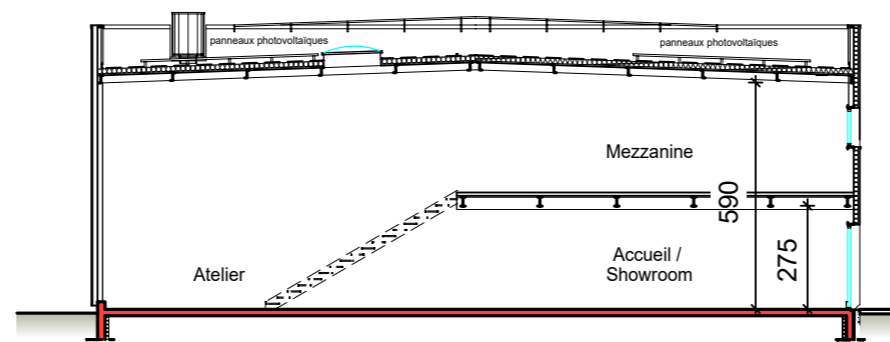
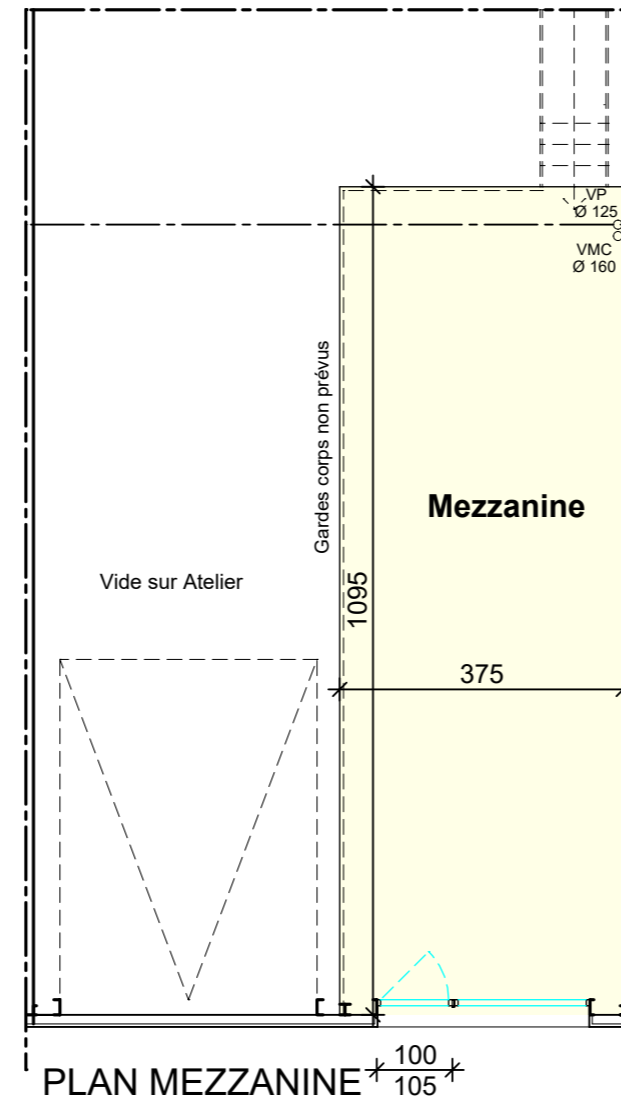
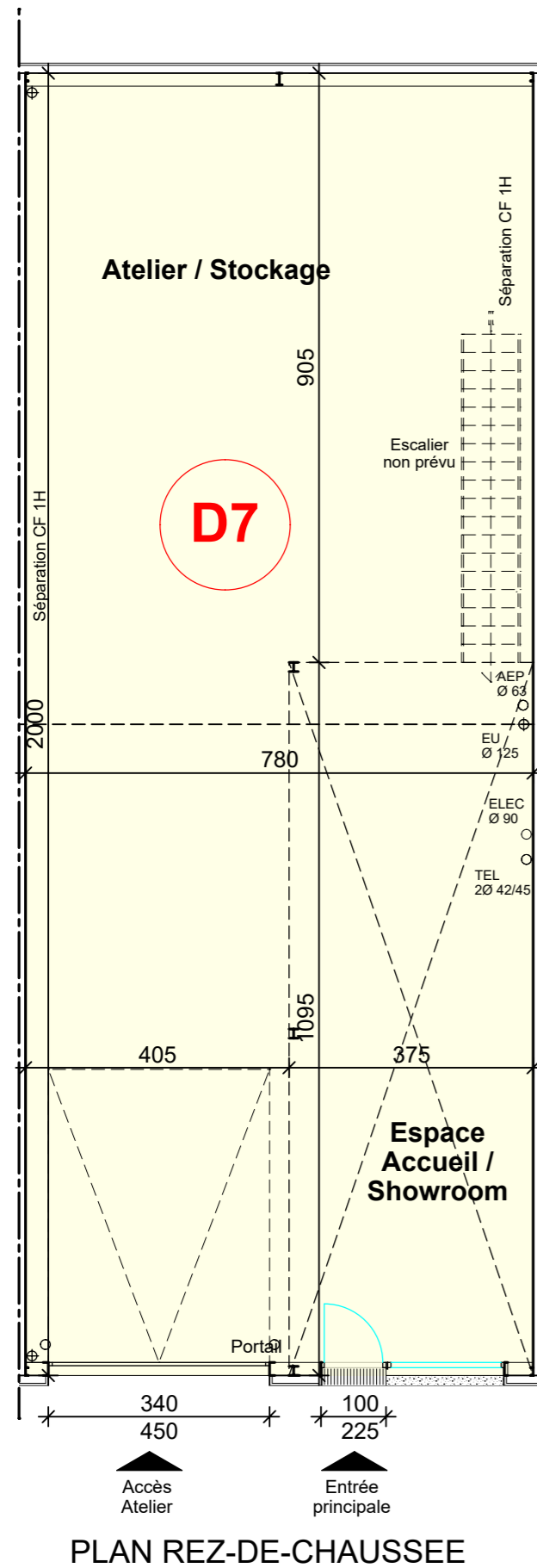


Plan de Commercialisation



CELLULE	SURFACES INTERIEURES BRUTES	
D7	Atelier / Stockage	
	Espace Accueil / Showroom RdC	154.70 m ²
	Mezzanine	41.00 m ²
TOTAL		195.70 m²
Plan réalisé le 30.09.2021	Modifié le :	



COUPE DE PRINCIPE

Echelle 1/50 1 m 2 m 5 m

